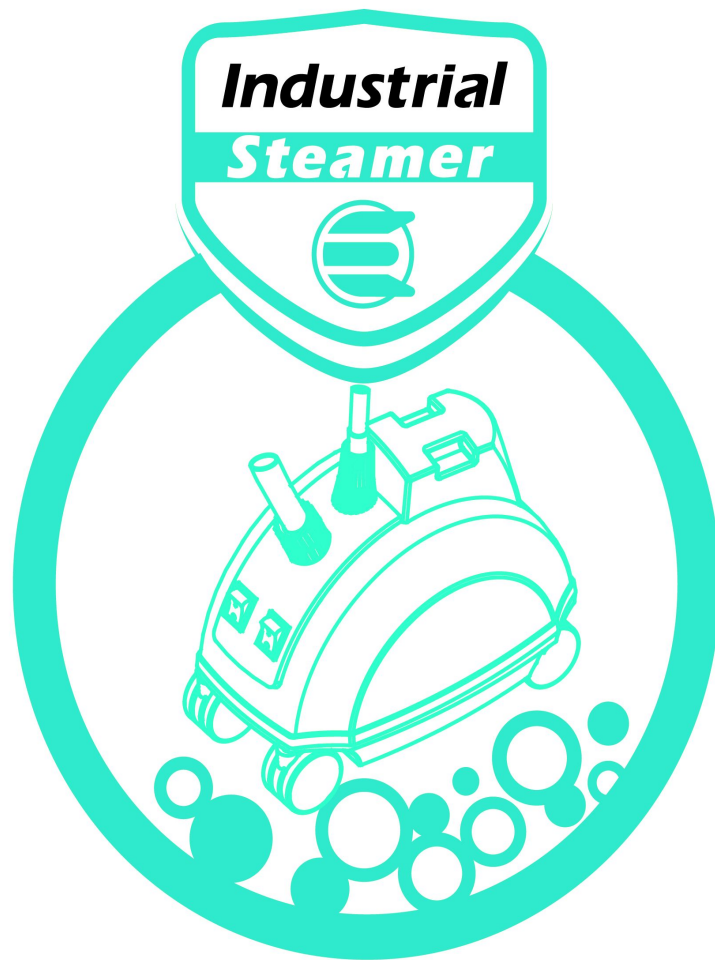


Industrial steam Iron

Silver Steamer

USER MANUAL

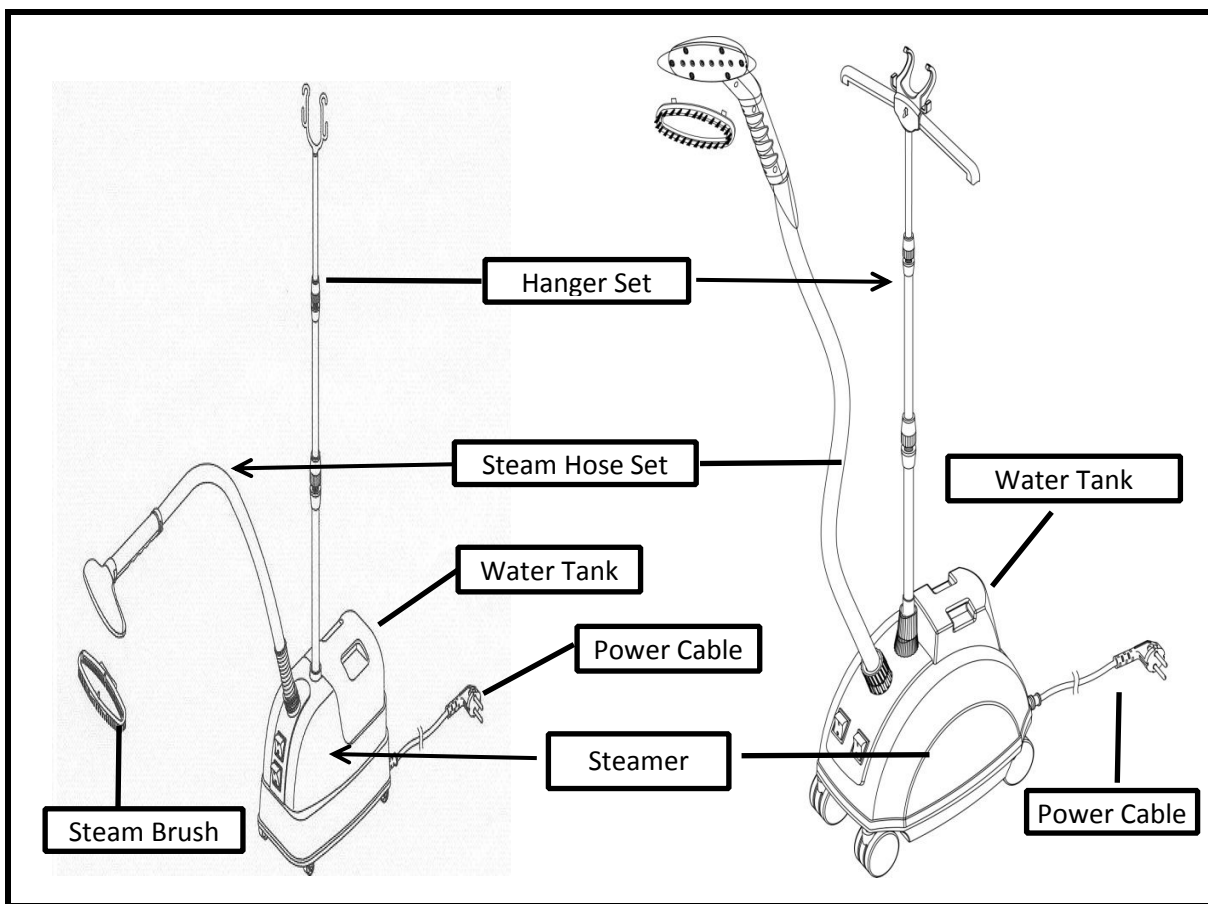
SILVER STAR[®]



What is steamer?

It is also called as 'Electric Unwrinkle', and is used to un wrinkle displayed dress wrinkles in department stores or other clothing stores. Different from general ironing using normal iron, it is used while clothes are displayed in hanger. It is a convenient ironing tool for any place where it needs to un wrinkle.

Product Part Names

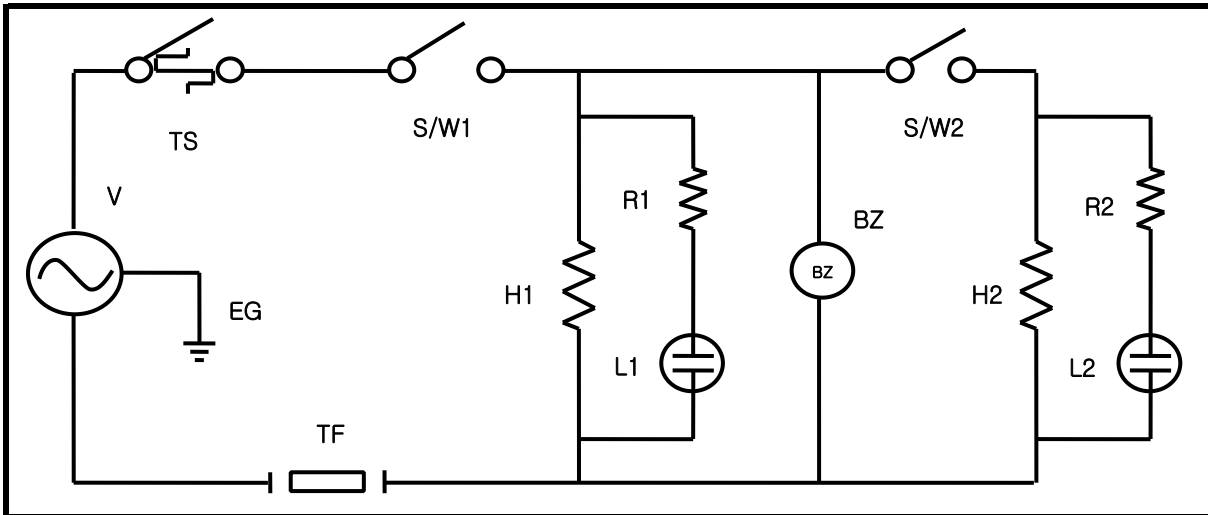


Size and Specifications

Model	Voltage	Power Consumption	Product Weight	Product Size
SR-5000	120V/220V	1350W	8.5Kg	400×260×320H
SR-5000	127V/230V	1500W	8.5Kg	400×260×320H
SR-8000	120V/220V	1350W	8.5Kg	400×280×320H
SR-8000	127V/230V	1500W	8.5Kg	400×280×320H

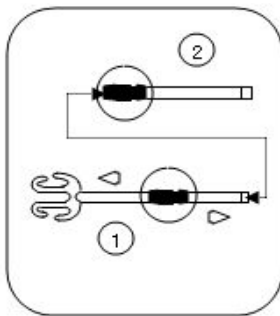


Circuit Diagrams



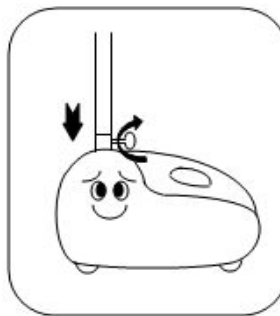
V: Voltage (AC120V, 230V), S/W1: Switch1, S/W2: Switch2, H1: Heater1, H2: Heater2, EG: Earth Ground, R1: Resistor1, R2: Resistor2, L1: Lamp 1, L2: Lamp 2, BZ: Buzzer, TS: Temperature Controller, TF: Temperature Fuse

Installation and Operation



1. Assemble hanger rod

- Pull out hanger rod 1 to the end and fix it by rotating 1. Assemble hanger rod 1 & 2, and fix it by rotating the round part.



2. Assemble hanger rod and steamer

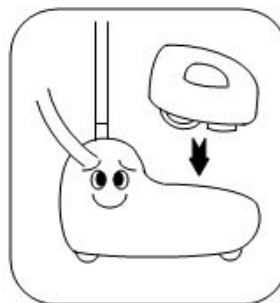
- Assemble hanger rod set from item 1 with steamer.



3. Hose set assemble

- SR~5000 Assemble hose set and steamer using accompanied spanner.
- SR~8000 Insert nipple of hose to steamer, then turn right.

- Be careful to tighten the joint during assemble.



4. Insert water tank

- Fill water tank with water, close water tank cap and place it to steamer.



5. Connect to power supply

- Insert plug to power socket and turn on the switch.



6. Operate

- It is ready to use when steam is sprayed after 1 minute and 30 second.

Safety Regulations

♣Please observe following safety regulations to prevent any danger or accidents.

1. Do not touch power plug with wet hands when plugging in to removing from power socket.
2. Do not remove the plug from the power socket by pulling on the cord.
3. Do not place excessive stress on the power cord by bending or tying.
4. Do not place heavy items over power cord or prevent it pressed by product.
5. Connect the product to a socket with at least 10A rated current, and do not share the socket with other products.
6. Assemble the steam hose set tightly to the product using the provided spanner.
7. Check the rated voltage before using it.
8. Do not disassemble or modify the product.
9. Do not spray steam directly to a person or touch steam when using it.
10. Be careful not to stumble and fall over the power cord.
11. Make sure the steam nozzle does not fall on the floor during or after use.
12. Product should be used only for ironing purpose.
13. Be sure to pull out plug when cleaning the iron after use.
14. Do not place heavy items over the product when storing it after use.
15. Use clean water that does not contain minerals, if possible.
16. Use iron only on a flat and leveled floor without slope.
17. This appliance can be used by children aged from 8 years and above persons with reduced physical, sensory or mental capabilities or lack of experience and knowledge if they have been given supervision or instruction concerning use of the appliance in a safe way and understand the hazards involved. Children shall not play with the appliance. Cleaning and user maintenance shall not be made by children without supervision.
18. If the supply cord is damaged, it must be replaced by the manufacturer, its service agent or similarly qualified persons in order to avoid a hazard.
19. This appliance is not intended for use by persons (including children) with reduced physical, sensory or mental capabilities, or lack of experience and knowledge, unless they have been given supervision or instruction concerning use of the appliance by a person responsible for their safety.
20. Children should be supervised to ensure that they do not play with the appliance.
21. Care should be taken when using the appliance due to the emission of steam;
22. Unplug the appliance during filling and cleaning.

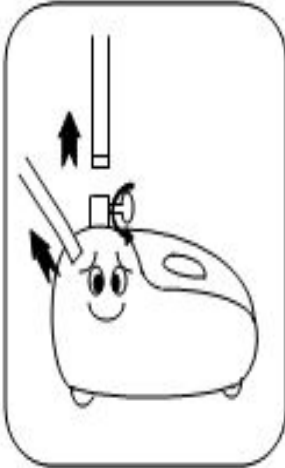
Maintenance and Storage

1. After using the product, remove the power plug and completely remove water inside the steamer and water tank.
2. When cleaning, wipe it with slightly wet towel, and then wipe it with dry towel before storing it.

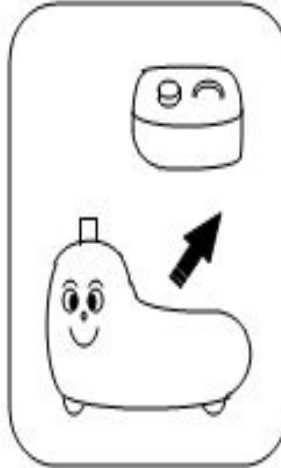


Simple Cleaning Methods

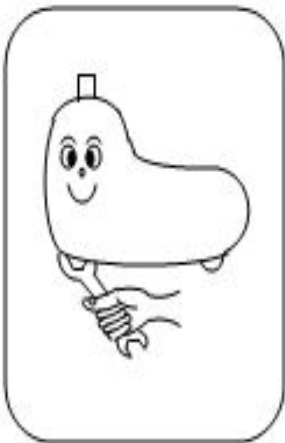
- ♣ Clean the product as described following procedure when steam does not come out well during using it.
- ♣ When cleaning, make sure that the power plug has been removed from the power socket before proceeding.



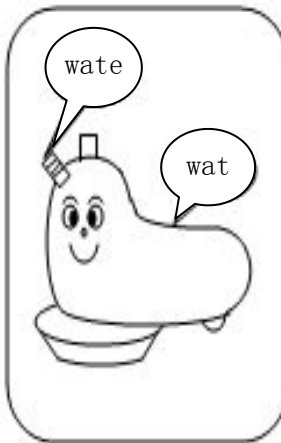
1. Separate hanger rod and steam hose.



2. Take water tank out of the body, and remove water inside the steamer.



3. Open cap under the steamer bottom.



4. Place water jar and pour water to the pointed holes to remove scale inside the product.



5. Remove scale in the cap.



6. After above cleaning procedure is completed, assemble the product and use it.